



SALE PRICE: \$185,000 | 2.25 ACRES

DEMOGRAPHICS

	1 mile	3 miles	5 miles
Estimated Population	4,153	15,412	33,667
Avg. Household Income	\$137,069	\$120,509	\$112,927

- Proposed Self-Storage site
- Zoned B-3 - General Business District
- Surrounded by rooftops and new development
- Great access at lighted intersection to US 73 Highway
- Average household income over \$100,000 within a five mile radius



CLICK HERE TO VIEW MORE LISTING INFORMATION

For More Information Contact:

GREG ROBERTS | 816.412.7384 | groberts@blockandco.com

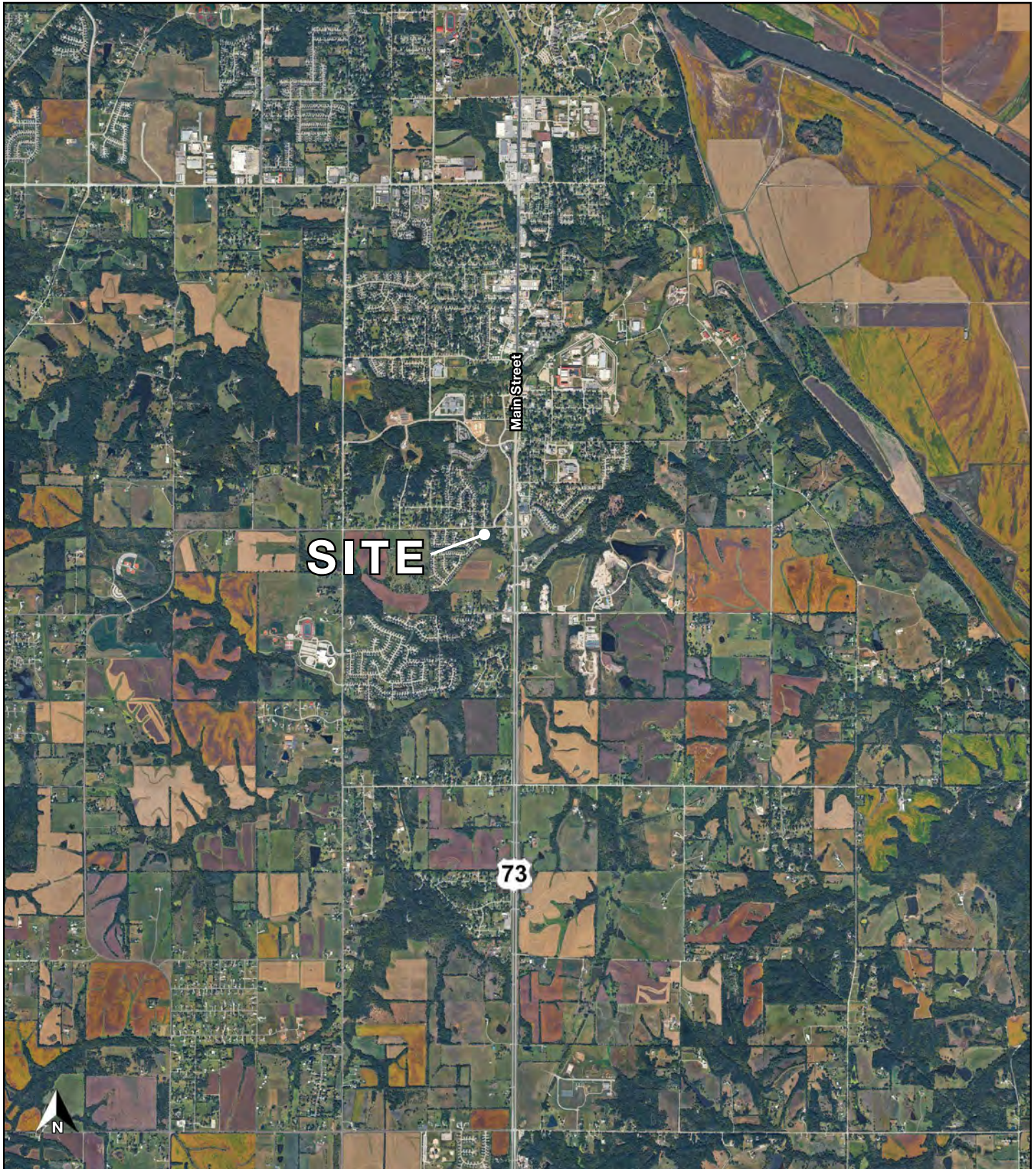
CAMREN SINCLAIR | 816.412.7352 | csinclair@blockandco.com

Exclusive Agents

DRONE PHOTOS

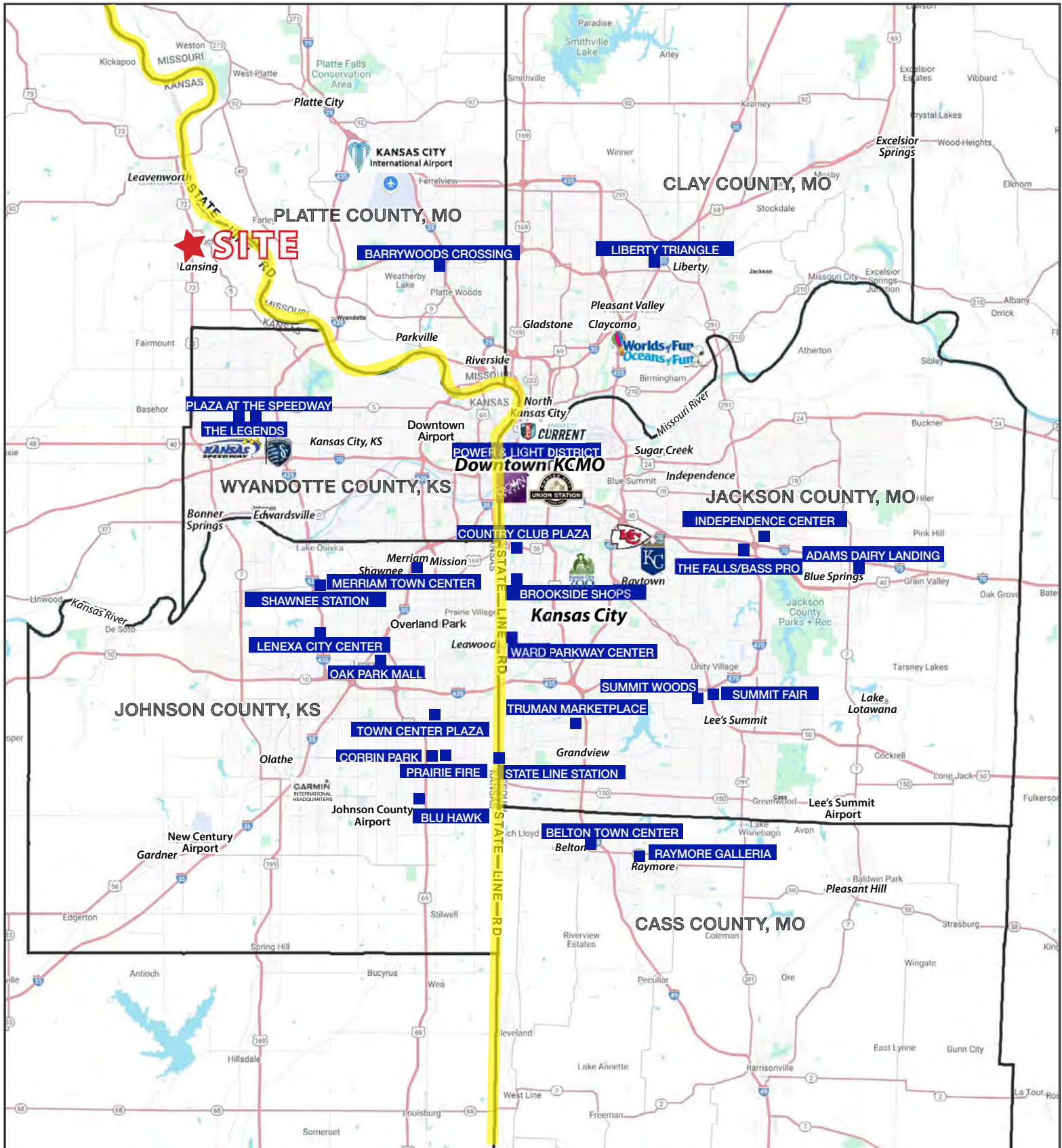


AERIAL



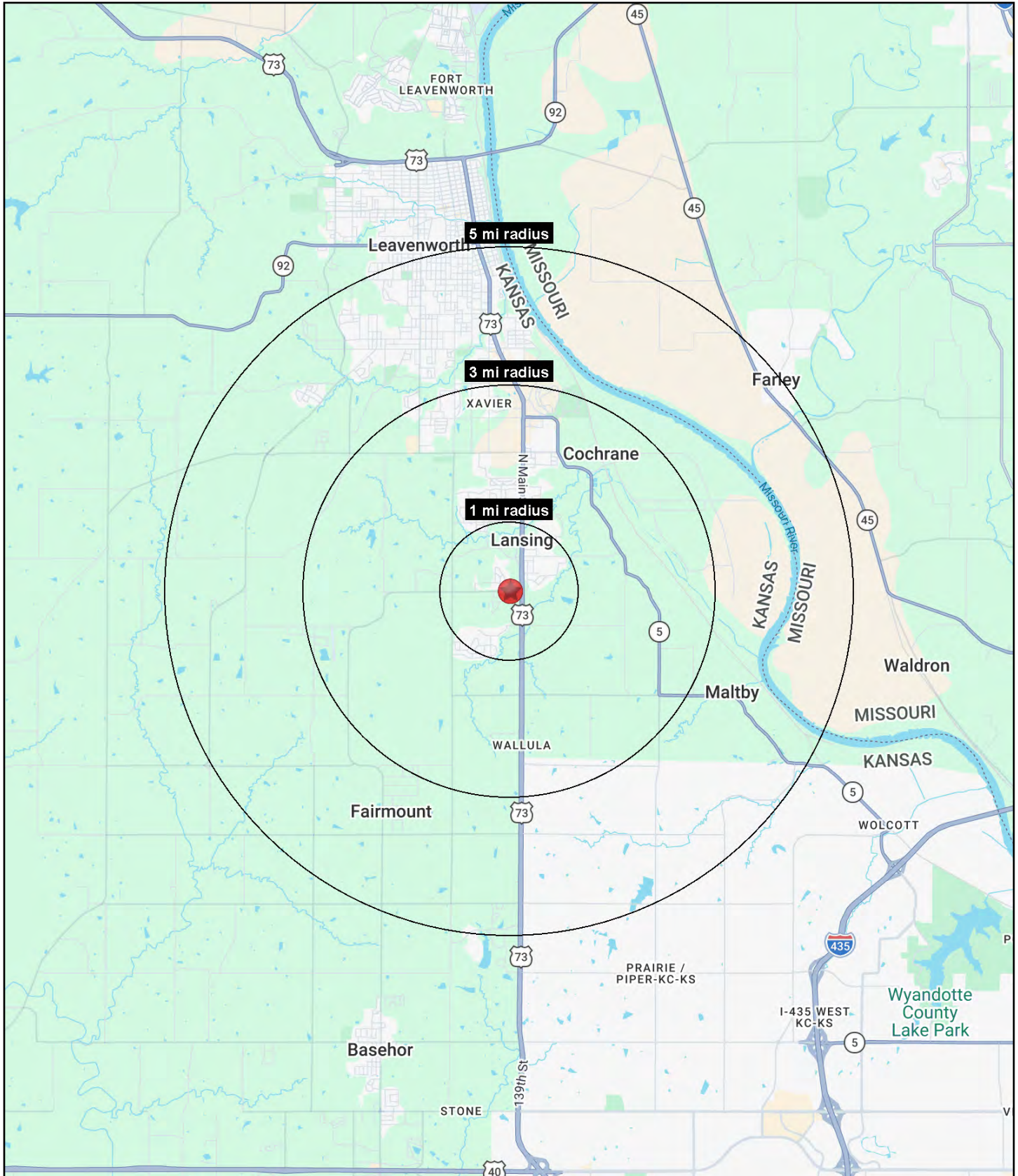
DEVELOPMENT GROUND

201 4-H Road, Lansing, Kansas



DEVELOPMENT GROUND

201 4-H Road, Lansing, Kansas





DEVELOPMENT GROUND

201 4-H Road, Lansing, Kansas

201 4-H Road Lansing, KS 66043	1 mi radius	3 mi radius	5 mi radius
Population			
2025 Estimated Population	4,153	15,412	33,667
2030 Projected Population	4,214	15,635	34,171
2020 Census Population	4,018	15,183	33,310
2010 Census Population	3,753	14,882	31,742
Projected Annual Growth 2025 to 2030	0.3%	0.3%	0.3%
Historical Annual Growth 2010 to 2025	0.7%	0.2%	0.4%
2025 Median Age	38.0	38.2	38.5
Households			
2025 Estimated Households	1,392	4,837	11,980
2030 Projected Households	1,437	5,003	12,343
2020 Census Households	1,286	4,682	11,593
2010 Census Households	1,130	4,245	10,656
Projected Annual Growth 2025 to 2030	0.6%	0.7%	0.6%
Historical Annual Growth 2010 to 2025	1.5%	0.9%	0.8%
Race and Ethnicity			
2025 Estimated White	79.3%	76.5%	77.0%
2025 Estimated Black or African American	9.7%	12.4%	11.5%
2025 Estimated Asian or Pacific Islander	1.7%	1.9%	2.2%
2025 Estimated American Indian or Native Alaskan	0.5%	0.6%	0.5%
2025 Estimated Other Races	8.8%	8.6%	8.9%
2025 Estimated Hispanic	8.4%	8.4%	8.6%
Income			
2025 Estimated Average Household Income	\$137,069	\$120,509	\$112,927
2025 Estimated Median Household Income	\$116,812	\$104,786	\$100,222
2025 Estimated Per Capita Income	\$45,951	\$38,070	\$40,333
Education (Age 25+)			
2025 Estimated Elementary (Grade Level 0 to 8)	0.7%	1.1%	1.2%
2025 Estimated Some High School (Grade Level 9 to 11)	2.9%	5.3%	4.9%
2025 Estimated High School Graduate	24.9%	26.7%	24.6%
2025 Estimated Some College	21.6%	20.8%	21.7%
2025 Estimated Associates Degree Only	4.8%	6.1%	8.4%
2025 Estimated Bachelors Degree Only	24.7%	21.9%	22.2%
2025 Estimated Graduate Degree	20.2%	18.1%	17.0%
Business			
2025 Estimated Total Businesses	86	405	654
2025 Estimated Total Employees	708	4,795	7,899
2025 Estimated Employee Population per Business	8.2	11.8	12.1
2025 Estimated Residential Population per Business	48.3	38.1	51.4

©2026, Sites USA, Chandler, Arizona, 480-491-1112 Demographic Source: Applied Geographic Solutions 11/2025, TIGER Geography - RS1